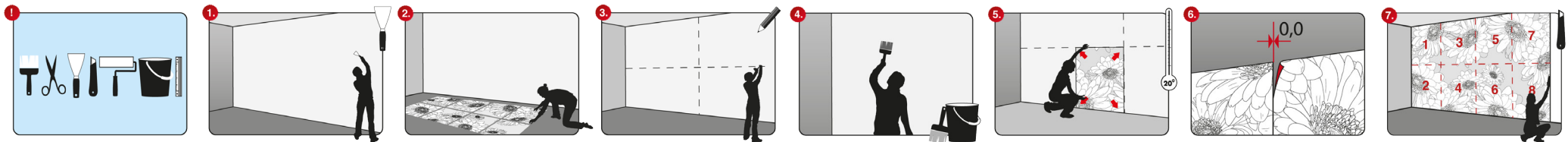


Manual Photomurals non-woven



1. All surfaces should be smooth, dry, stainless and free from dust and grease.
 2. Lay out the wallpaper before hanging and check for any defects as we do not offer compensation once mural has been applied.
 3. To mark the position of the first panel, draw vertical lines on the wall, using a pencil, a level and a plumbline.
 4. Apply the glue evenly and directly to the wall surface.
 5. Press each panel with a soft brush or roller, or a dry cloth onto the wall. Work from top to bottom and from centre to the edges. As many walls are not perfectly perpendicular, we recommend starting with sheet 4.
- The drying period must be quite long, as drying too quickly will cause separation of the edges and cracking of the mural could occur. The work should therefore be done at a room temperature of approx. 20°C. In winter the room must be moderately heated. Keep the windows closed to avoid any draft.
6. Hang the wallcovering without overlap or soaking time. Use commercial glue for non-woven wallcoverings.
 7. Finally trim any excess carefully. Remove excess paste from the wallpaper with a moist foam immediately.